

# GRECO

Architectural Metal Products  
A CSW Industrials Company

## PRODUCTS

GRECO works extensively with custom, decorative, design-driven products utilizing aluminum, stainless steel, and glass. Our service team designs and engineer's custom architectural railings and metal products for new construction and restoration projects.

### Architectural Railings

- Stainless / Aluminum Glass Railings
- Stainless Cable – *horizontal & vertical*
- Aluminum Railings – *with glass, mesh or perforated metal infill*
- Aluminum Picket
- Point Supported Glass
- Glass Windscreens
- Blade Railing Systems
- Aluminum and Stainless Gates
- Custom Railings

### Architectural Metal Products

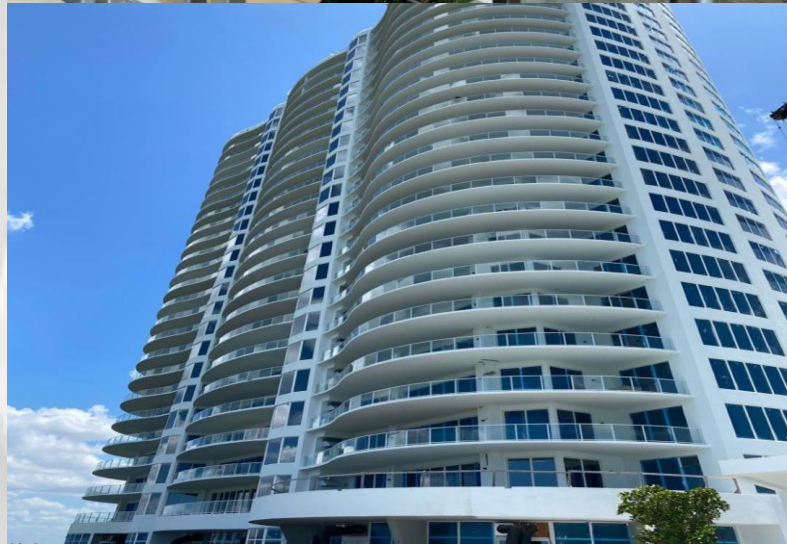
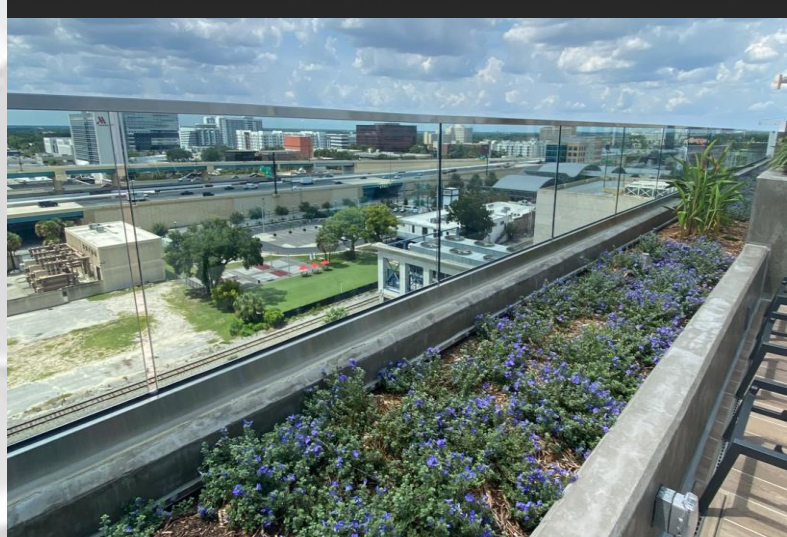
- Trellises & Canopies
- Louvers & Ladders
- Screen Wall & Green Screens
- Sunshades
- Decorative Features
- Spiral Stairs

### Metal Panels

- Wire Mesh
- Perforated Metal
- Custom

### Glass

- Monolithic Tempered
- Tempered Laminated – *PVB, SGP, EVA, Vanceva, Frit*
- Tinted or Digitally Printed Images







# CAPABILITIES

GRECO manufactures all of its engineered products in house. With state-of-the-art CNC equipment and a multistage, automated powder-coat paint line, GRECO produces the highest quality railings and metal products in the industry. Greco is a turn-key solution offering design, project management, field measure, and install.

## Designing The Future

### Alumiview Railings

Modular, commercial, pre engineered, all aluminum and glass guard rail system. No horizontal supports required. A clean contemporary system that is easy to install.

### Alumiview Windscreen

A modular system to match our Alumiview rail. This windscreen system is designed to be 4' - 8' tall.

### G-Light

LED lighting built right into the rail system with state-of-the-art low voltage LED light strips. A great lighting option for your next project.

### G-Blade Rail

Stylish, blade-like post system. Available in stainless and aluminum. Able to accommodate a variety of panel infills.

### G-Blade Windscreen

An extension of the G-Blade railing design with the ability to extend from 4'-6' in height.

---

# GRECO

Architectural Metal Products  
A CSW Industrials Company

#### U.S. Operations

**Florida**  
9410 Eden Avenue  
Hudson, FL 34667  
(727) 372-1100

#### Canada Operations

**Ontario**  
3255 Wyandotte St. East  
Windsor, ON N8Y 1E9  
(519) 966-4210

GRECO | [www.greco railings.com](http://www.greco railings.com)