

G-LIGHT™

LED LIGHTING FOR RAILINGS

The G-LIGHT system from Greco Architectural Metal Products provides LED lighting built right into the rail system with state-of-the-art, low-voltage LED light strips. G-LIGHT™ can be used in new railing or retrofit applications offering a decorative feature and illumination for safety and the perfect ambiance for any outdoor or indoor architectural space.

G-LIGHT Data

Material Options

Aluminum: The G-light system uses 1.5 inches custom extruded tubing that houses the unique space for wires necessary to run multiple railings with one driver. Finishes off with an opaque lens cover concealing all of these parts for a clean and safe finish product.

Stainless Steel: Stainless steel tubing with similar specifications as aluminum is also available.

Finish Options

Aluminum: Various finish options are offered, including powder coat, anodized, Kynar, and mill finish.

Stainless Steel: Stainless steel options include brushed #4 finish and powder coating.

Length Limitations

The length of the G-lighted handrail is determined by the distance between the lighted rail location and the electrical connection point from the house power and LED driver. Two options are available:

Option 1 (Standard): LPV-100-24 driver supports approximately 30 lineal feet of G-lighted handrail. *Note: confirmation from your electrical contractor is recommend.*

Option 2 (Upgraded): HLG-480H-24 driver allows for up to 90 lineal feet of G-lighted handrail. *Note: confirmation from your electrical contractor is recommend.*

Design Styles

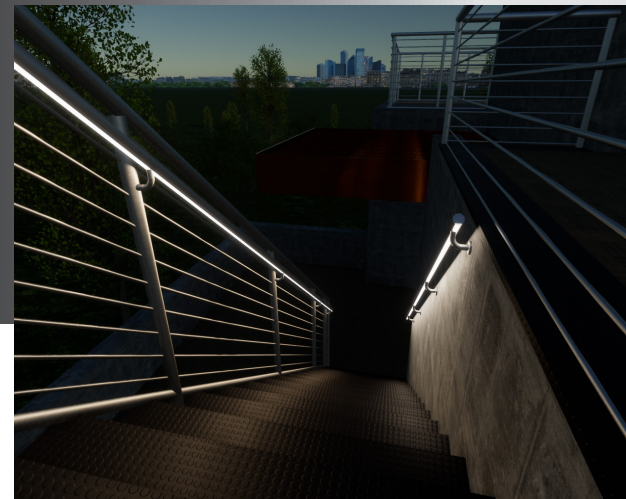
Design styles for G-lighted handrails are based on architectural aesthetics and access to electrical systems:

Single Line Handrails for Stairs: These are the most popular and involve coordinating the location of the chase or conduit with the electrical contractor, either at the top or bottom of the handrail location in order to allow access from the power source.

Wall Mounted Handrails for Stairs: In cases where there is a wall or substrate on the exterior side of stairs, access for conduit or chase must be designed either at the top or bottom of the handrail, or by returning it to the ground in order to allow access from the power source.

Handrails Mounted on Guard Railings: Similar to wall-mounted handrails, access for electrical conduit or chase must be coordinated at the top or bottom of the handrail or through the balusters in order to access from the power source.

Note: It's crucial to consult with an electrical professional to determine the appropriate option and wire sizing based on the project's specific requirements and the distance between power sources and drivers.



Key Features

- ✓ Versatile architectural lighting solution
- ✓ Provides safety and lighted pathway
- ✓ Can be fully welded into a custom application
- ✓ Linear lighting rail
- ✓ Retrofit options with mechanically attached bracket

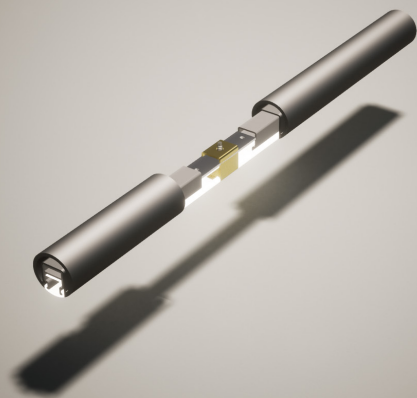
Top Rail Lighting

The G-light system can also be added to the top of various railing designs for guard rail systems. Access for wiring can be coordinated at one end or the other, either through the ground, wall, or railing balusters. This option can provide both aesthetic and safety lighting.

Product Consultation

Greco Architectural Metal Products offers consultation services to help with project-specific dimensions, electrical access planning, and coordination with installers and electricians.

When considering the G-LIGHT system for a project, factors such as material selection, finish, power supply, wire sizing, and conduit access should all be carefully evaluated to ensure a successful installation.



G-LIGHT Product Specs

Insert LED light track into G-LIGHT slotted tube

1. Source: Selected high brightness LED
2. Life (L70/ 70% brightness): 50,000 hours
3. Light Output: [G-light Standard Output, [6000K] [1000K]
4. Housing: Extruded Aluminum or stainless steel
Mounting: adhesion
5. Listings: ETL Listed for wet or dry locations
 - a) Total Length: [0' to 30'] w/LPV-100-2
 - b) Total Length: [0' to 90'] w/HLG-480-24
6. Power Requirements: 24V
7. Power Consumption: G-LIGHT [3.7 W/ft] [4.5 W/ft]
8. Power Supply: 24V / 100W
9. Input Voltage to Power Supply: [120-277] [347]
10. Temperature Range: -40° C through +60° C
11. Product Rating: Interior and Exterior Applications, ETL, Class 2 circuit
12. Beam Angle: [Symmetric]
13. IP Grade IP67

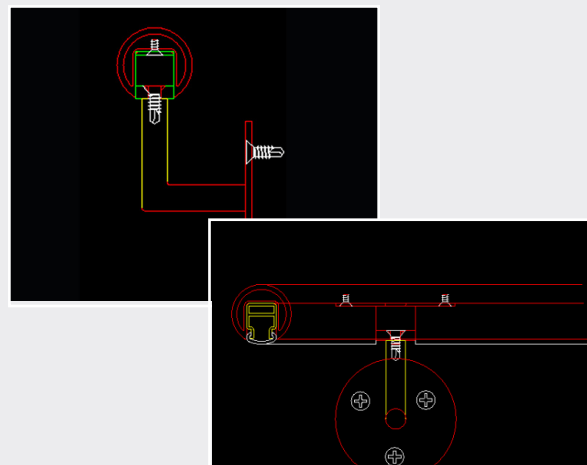


G-LIGHT References

- [Wire Size and Voltage Drop Chart >>](#)
- [Installation Manual >>](#)
- [480W Constant Voltage + Constant Current LED Drive Reference \(HLG-480H series\) >>](#)
- [LED Power Supply Installation 100W Single Output Switching Power Supply Reference \(LVP-100 series\) >>](#)
- [LED Strip Light Data Sheet >>](#)

G-LIGHT BIM

G-LIGHT BIM files are available. Click on the QR Code below to request BIM or CAD files.



BIM & CAD Files